

BROADLAND GREEN PARTY

GREEN NEWS

BRUNDALL & AREA VILLAGES



Jan Davis & Eleanor Laming

Winter 2021

**Brundall, Cantley, Buckenham, Hassingham, Limpenhoe,
Postwick, Southwood, Strumpshaw, Witton**

THANK YOU !!

BY-ELECTION RESULT

We would like to take this opportunity to thank the 1,124 people who voted Green across all the villages of Brundall Ward.

The result wasn't so much about us, as candidates, or even the Green Party. It was about you, the people across the whole of the ward, who so clearly feel the need for change.

The by-election result means there is now broader representation on Broadland District Council which can only be a good thing for local democracy.



New developments will result in even more traffic and busy junctions. We will highlight the issues that need to be tackled.

YOUR CONCERNS

We listened to the concerns you raised with us on the doorstep:

- Houses are being built in the wrong places with insufficient drainage, sewerage, health services and school places to support them.
- More developments leads to an increase in traffic which needs planned, effective, safe management.
- More traffic leads to poorer air quality which needs monitoring to check unsafe levels of pollution are not exceeded.
- Flooding due to poor highways drainage and overflowing sewers.

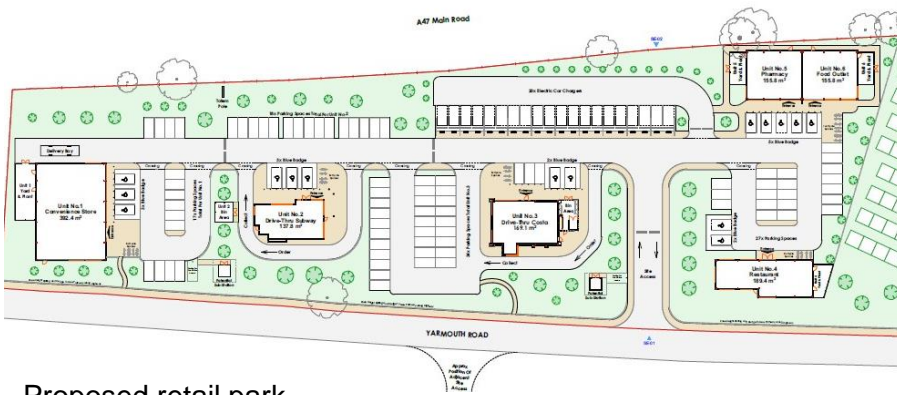


We are raising concerns about insufficient highway drainage, overflowing sewers and subsequent flooding

**JAN AND ELEANOR
SPEAKING UP AND WORKING HARD FOR YOU**

THE GREEN PARTY FOR POSITIVE CHANGE

WHAT WE ARE DOING



Proposed retail park
Yarmouth Road, Brundall. Planning application no.: 20211493

We have been listening to your views, liaising with planning officers, and responding to requests for information and guidance on planning applications.

An example is the proposed retail park on Yarmouth Road which will only add to the already heavily congested traffic on the Cucumber Lane roundabout and local Brundall and Blofield roads.

Does Brundall really need four new food outlets and a third pharmacy to compete with existing village retailers?

Working with parish councils

Jan and Eleanor attend and report to monthly parish council meetings for Postwick with Witton; Brundall; Strumpshaw; and Cantley, Southwood & Limpenhoe. Meetings are open to the public.



We are working with Brundall Parish Council on air quality and road safety - a concern for many villages

LOCAL PROBLEM? WHERE TO FIND HELP

BINS & RECYCLING	01603 430534
POTHoles, PAVEMENTS & ROADS	0344 800 8020
HOUSING BENEFIT	01603 430602
PLANNING PERMISSION	01603 430509
CITIZENS ADVICE	0800 144 8848
ANTISOCIAL BEHAVIOUR 101 OR	01603 430488
DOG FOULING	01603 430534

If there's an issue you need to raise, contact the council directly using the numbers above, or email: Broadland District Council: reception@broadland.gov.uk or phone General Enquiries: **01603 431133**

Issues can also be reported via the council website: <https://www.southnorfolkandbroadland.gov.uk/>

To report highways issues: <https://www.norfolk.gov.uk/roads-and-transport/roads/report-a-problem>

If you're having a problem with council services, get in touch with Jan or Eleanor who will try to help.

HOW TO GET IN TOUCH

**WE WOULD
LIKE TO HEAR
FROM YOU!**

The Broadland Green Party team can be even more effective working on local issues with your help. Could you:

- **Let us know which issues matter to you**
- **Help deliver newsletters to a street near you?**

Please call or text: 07443 427788

Jan Davis: cllr.Jan.Davis@southnorfolkandbroadland.gov.uk

Eleanor Laming: cllr.Eleanor.Laming@southnorfolkandbroadland.gov.uk

BROADLAND GREENS WORKING HARD FOR YOU

Published by Broadland Green Party
Printed by Anglia Print Ltd., on recycled paper using vegetable inks.

