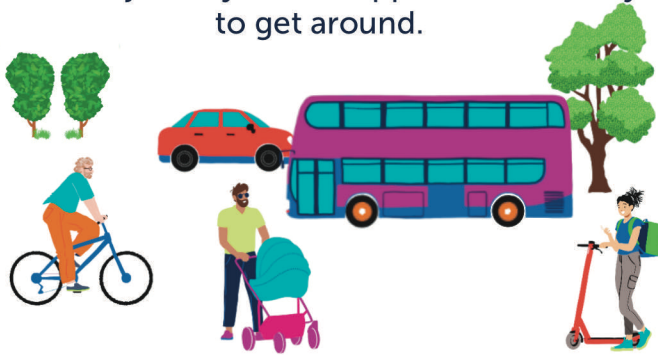


Oxford's traffic filters

A simple, accurate guide to what's happening and why

Our county is growing. We're going to have a lot more housing, and we're also owning more cars than ever before.

We can manage this growth, together, if some car journeys are swapped to other ways to get around.



There will be six traffic filters. A filter is an ANPR camera, and they will be on six roads around Oxford. ANPR means 'automatic number plate recognition' and they are a common way to 'read' car number plates.

Oxford's filters will cap how many days of the year most people can drive through them, but every part of the city will be reachable by car without passing through a filter.

Oxfordshire County Council are introducing them, and they will be switched on in late 2024 as a trial. The trial may last up to 18 months before the decision to make it permanent or not is taken.

Why is this happening?

More houses, a rising population and more cars per household is making our roads increasingly crowded.



100,000 new homes across Oxfordshire have been, or are due to be built between 2011-31, with an average of 1.42 cars per household.

This is slowing buses down, and makes it harder to run many routes. It also makes cycling less safe, so people feel they have no option but to drive. We end up with more cars on the road and stuck in a negative loop! To change this, something different needs to be tried.

What benefits will the filters bring?

Faster buses

More frequent buses

New bus routes

Safer and nicer walking, cycling and wheeling

And cleaner air...



Lower NO₂ in 90% of locations

...fewer road deaths...



34 fewer casualties a year

...and fewer planet-heating gases!



6% reduction in CO₂ from Oxford's transport annually

What about people who will find it harder to swap journeys?

There are many exemptions and passes for particular groups who would find it harder to change. These are only a few:



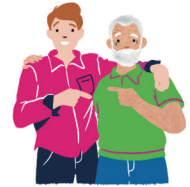
Health and care workers



Vans



People needing frequent hospital treatment



Qualifying unpaid carers



Blue badge holders and other groups with disabilities



School students who get direct travel payments

In addition, emergency services, buses, coaches, minibuses, motorbikes and mopeds are exempt.

There are important details about the passes which cannot fit here! Please check them out on Oxfordshire County Council's website



Scan this code with a phone camera - County's website



This leaflet was created by Oxfordshire Liveable Streets
OxfordshireLiveableStreets.org.uk

Information accurate as of April 2024

Traffic filter locations and details

The filters have been located so you can drive to every part of the city without going through a filter.

The **blue filters** will operate 7am - 7pm, every day.

1. Hythe Bridge Street
2. Thames Street
3. St Cross Road
4. St Clements

The **orange filters** will operate 7-9am and 3-6pm Monday to Saturday.

5. Marston Ferry Road
6. Hollow Way



Day passes!

In addition to the exemptions (overleaf) there are 'day passes'. Everyone living within the light blue area will be able to apply for 100 passes, up to three cars per household. If you live in Oxfordshire but outside the light blue area you can apply for 25 passes, up to two cars per household. The passes mean you can drive through as many of the filters as you wish, as many times as you wish, for one day. The passes are free.

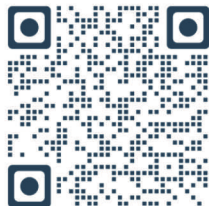
The passes are per car owner and per household, so three sets of passes would need three different car owners registered at that address. One car owner cannot have multiple sets of passes. They cannot be swapped between vehicles.

Fines

If you pass through a filter point without having registered for the passes or having an exemption you will be fined £35, increasing to £70 after two weeks.

Finding this leaflet helpful? It's available as a simple website so you can share it

Scan this code with your phone camera and click on the link which appears or find it here:



OxfordTrafficFilters.co.uk

All the statistics overleaf about air quality, casualties and CO2 emissions can be found in the air quality, road safety or strategic assessment reports for the traffic filters, on Oxfordshire County Council's website, at the bottom of the traffic filters page (see QR code overleaf).

Printed on 100% recycled paper powered by 100% renewable energy. No chemistry used in the production is harmful to the environment.